

### Firm Description

Arroyo Investment Group is a fee-only financial planning and investment management firm based in Pasadena, California. Our full-service, fiduciary advice is offered for a single all-inclusive fee.

### Product Description

Arroyo Global All Cap Growth model (80%/20% model). Accounts with approximately 80% target allocation to stock funds, and approximately 20% target allocation to bond funds. The benchmark to the fund is a blend of the MSCI ACWI (80%) and the Barclays Global Aggregate Bond Index (20%) indexes, rebalanced monthly. Inception date 08/01/2009.

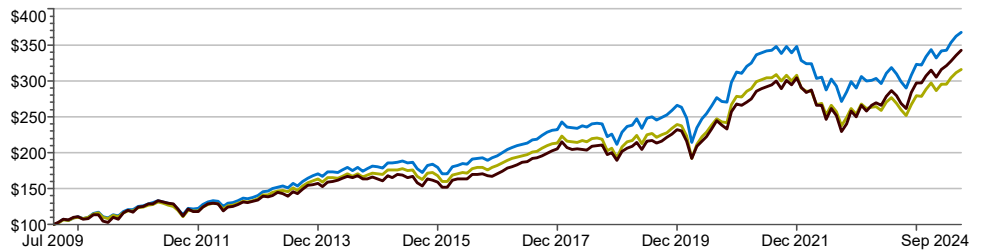
80% / 20% Portfolio Morningstar Category	09/30/2024
US Fund Multisector Bond	9.00%
US Fund Intermediate Core-Plus	8.00%
US Fund Large Value	7.00%
US Fund Small Value	7.00%
US Fund Mid-Cap Value	7.00%
US Fund Foreign Large Value	7.00%
US Fund Foreign Large Growth	7.00%
US Fund Global Large-Stock Growth	7.00%
US Fund Diversified Emerging Mkts	7.00%
US Fund Mid-Cap Growth	7.00%
US Fund Small Growth	7.00%
US Fund Prime Money Market	7.00%
US Fund Large Blend	7.00%
US Fund Emerging Markets Bond	5.00%
Cash or Cash Equivalents	1.00%
Total:	100.00%
Capitalization	% of Composite
Large Cap	51.05%
Mid Cap	25.75%
Small Cap	23.20%
Total:	100.00%
Style	% of Composite
Blend	38.29%
Growth	35.14%
Value	26.57%
Total:	100.00%

### Contact Us:

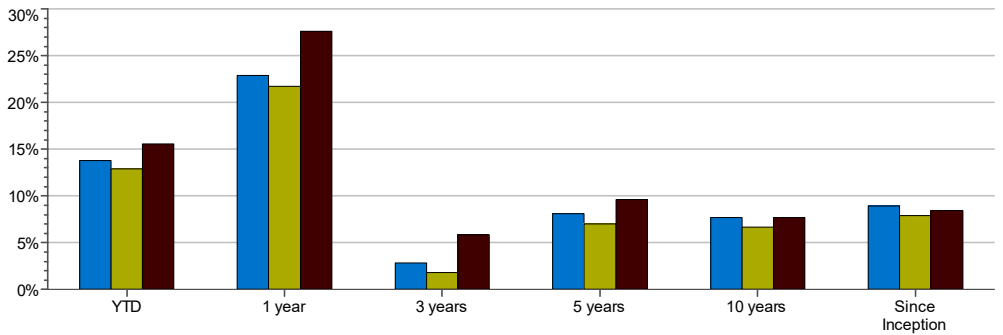
Arroyo Investment Group  
 15 South Raymond Avenue, Suite 200  
 Pasadena, California 91105  
[www.arroyoinvestmentgroup.com](http://www.arroyoinvestmentgroup.com)

Arroyo Global All Cap Growth (G)	Arroyo Global All Cap Growth (N)	80% MSCI ACWI - 20% Barclays Global Aggregate Blend
----------------------------------	----------------------------------	---

### Growth of \$100,000: Since 08/01/2009



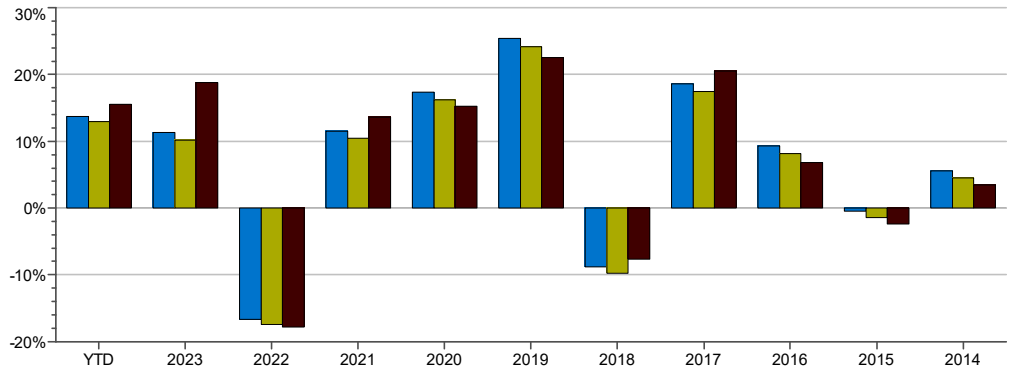
### Arroyo vs Benchmark



### Arroyo vs Benchmark

	YTD	1 year	3 years	5 years	10 years	Since Inception
Arroyo Global All Cap Growth (G)	13.76%	22.90%	2.80%	8.07%	7.72%	8.95%
Arroyo Global All Cap Growth (N)	12.92%	21.69%	1.78%	7.00%	6.65%	7.87%
80% MSCI ACWI - 20% Barclays Global Aggregate Blend	15.53%	27.62%	5.87%	9.63%	7.71%	8.46%

### Calendar Year Return



### Risk / Return Table: Since 08/01/2009

	Return	Std Dev	D'side Risk	Beta	Alpha	R-Sq	Sharpe Ratio	Tracking Error
Arroyo Global All Cap Growth (G)	8.95%	11.53%	8.68%	0.90	1.29%	92.50%	0.6789	3.41%
Arroyo Global All Cap Growth (N)	7.87%	11.53%	8.68%	0.90	0.28%	92.50%	0.5855	3.41%
80% MSCI ACWI - 20% Barclays Global Aggregate Blend	8.46%	12.37%	9.14%	1.00	0.00%	100.00%	0.5931	0.00%



Sector Exposure	% of Composite
Technology	18.92%
Financial Services	16.29%
Healthcare	14.57%
Industrials	14.07%
Consumer Cyclical	9.81%
Communication Services	6.10%
Consumer Defensive	5.61%
Energy	5.12%
Basic Materials	4.60%
Utilities	2.51%
Real Estate	2.40%
Total	100.00%

Arroyo Investment Group, LLC claims compliance with the Global Investment Performance Standards (GIPS®).

Arroyo Investment Group, LLC is an independent registered investment adviser. The firm maintains a list of composite descriptions, which is available upon request. The 80/20 Composite contains portfolios approximately invested 80% in equity mutual fund holdings and approximately 20% in bond mutual fund holdings. The U.S. Dollar is the currency used to express performance.

The custom benchmark uses an 80/20 blend of the MSCI ACWI - Net (80%) and the Barclays Global Aggregate Bond Index (20%) indices rebalanced monthly.

Returns include the reinvestment of income. Performance shown represents total returns that include income, realized and unrealized gains and losses. Gross performance includes any transactions costs and custodial fees, if applicable. Net of fee performance was calculated using the highest management fee of 1%, applied monthly.

Prospective clients can obtain a GIPS Report upon request by contacting us at [arroyoinvestmentgroup@arroyoinvestmentgroup.com](mailto:arroyoinvestmentgroup@arroyoinvestmentgroup.com).

GIPS® is a registered trademark of CFA Institute. CFA Institute does not endorse or promote this organization, nor does it warrant the accuracy or quality of the content contained herein.

Past performance is not indicative of future results.